



Whites Square, Clapham, SW4

3 bedroom flat - purpose built for sale

£465,000

Leasehold

Property Details

An appealing three double bedroom flat arranged over the first floor of a purpose built property in White's Square, set back off Nelsons Row, a quiet one-way street in the heart of Clapham. Set to the corner of the building this flat is very bright with generous proportions, and has been recently refreshed. The reception is spacious and characterful, the ideal space in which to host dinner at the table or lounge in front of the feature fireplace. The separate kitchen is fully integrated with quality appliances within sleek gloss cabinets offering generous storage. All three bedrooms enjoy a peaceful setting with leafy views and wooden flooring. The two larger bedrooms are particularly generous doubles with ample space for wardrobes and additional storage. The third bedroom is currently being utilised as a home office, yet could be repurposed back into a rentable double. The family bathroom is furnished with both shower and bath. Adjacent the WC is separate, making the property ideal for sharers or the potential to combine into one, subject to the necessary permissions. Last but not least there is further storage in the charming hallway, ideal for neatly storing away essential belongings.

Council tax band B

EPC rating C (73)

Features

- Three double bedrooms
- Purpose built
- Bright and airy throughout
- 700 square feet of well-appointed space
- Separate kitchen and reception
- Clapham High street on the doorstep
- Clapham Common a short five-minute stroll
- Clapham Old Town close by
- Northern Line at Clapham Common tube in five minutes
- Chain-free

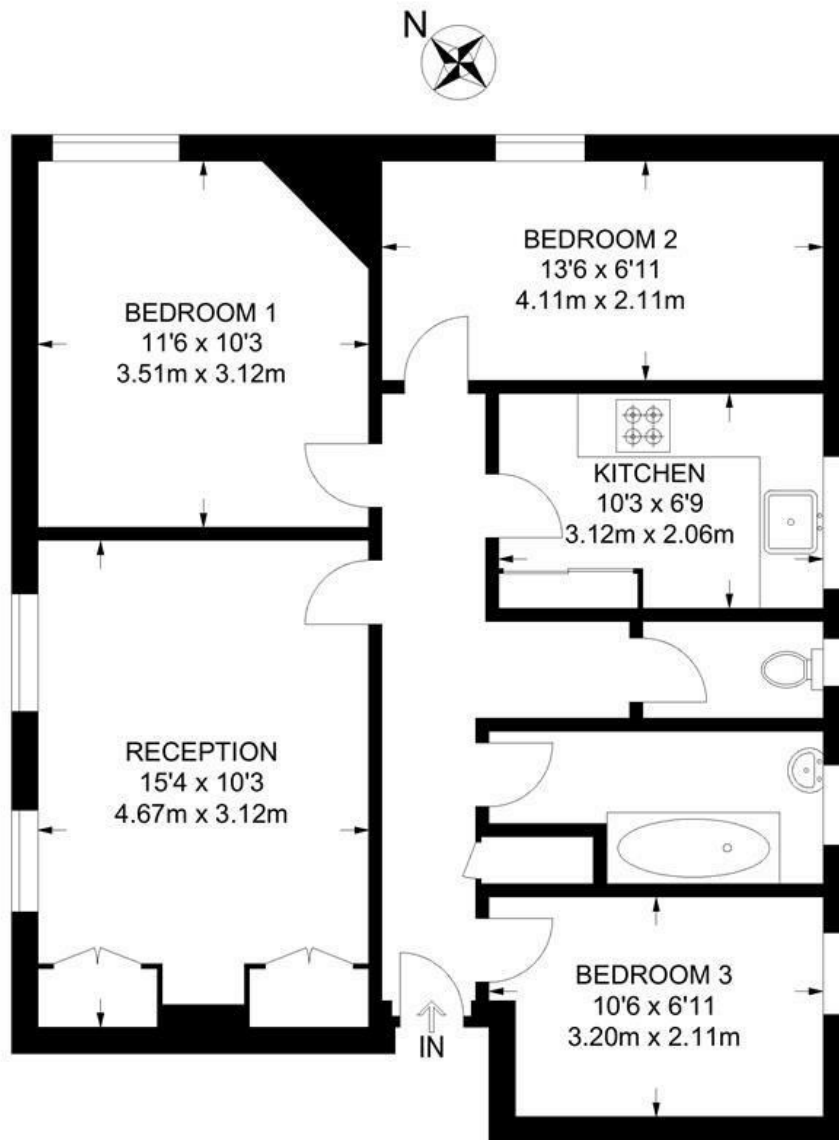




Whites Square, Clapham, SW4

Whites Square, SW4 3 Bedroom Flat

APPROXIMATE GROSS INTERNAL AREA: **700 SQ FT / 65 SQ M**



First Floor



While we try our very best, floor plans are produced as a guide only and we take no responsibility for the precise accuracy with which any property is represented.

Whites Square, Clapham, SW4

